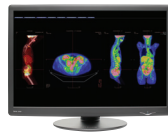


Dome® Color Medical Imaging Displays

Make the *Right Choice*.



	Dome GX2MP Plus	Dome GX4MP	Dome E2cHB	Dome E3cHB	Dome S3c
LCD CHARACTERISTICS					
Technology	TFT AMLCD Dual Domain IPS, 3 subpixels per pixel	TFT AMLCD Dual Domain IPS, 3 subpixels per pixel	TFT AMLCD Dual Domain IPS, 3 subpixels per pixel	TFT AMLCD Dual Domain IPS, 3 subpixels per pixel	TFT AMLCD Dual Domain IPS, 3 subpixels per pixel
Screen Diagonal	20.1" (511mm)	30.0" (756.2mm)	19.6" (498mm)	21.3" (541mm)	21.3" (541mm)
Display Resolution	1600 x 1200 Landscape 1200 x 1600 Portrait	2560 x 1600 Landscape	1200 x 1600 Portrait 1600 x 1200 Landscape	1536 x 2048 Portrait 2048 x 1536 Landscape	1536 x 2048 Portrait 2048 x 1536 Landscape
Pixel Pitch	255µm, 100 DPI	251µm, 101 DPI	249µm, 102 DPI	211.5µm, 120 DPI	211.5µm, 120 DPI
Viewing Angle	178° horizontal and vertical	178° horizontal and vertical	170° horizontal and vertical	176° horizontal and vertical	176° horizontal and vertical
Response Time	6.5 ms typical	6 ms typical	25 ms typical	14 ms typical	14 ms typical
OPTICAL CHARACTERISTICS					
Brightness	250 cd/m² typical	370 cd/m² typical	800 cd/m² typical	800 cd/m² typical	800 cd/m² typical
Default Calibrated	185 cd/m²	250 cd/m²	500 cd/m²	500 cd/m²	500 cd/m²
Contrast Ratio	800:1 typical	1,000:1 typical	700:1 typical	750:1 typical	750:1 typical
DICOM LUT	OS LUTs with 0.4 JND precision	OS LUTs with 0.4 JND precision	16-bit architecture with 0.3 JND precision	16-bit architecture with 0.3 JND precision	16-bit architecture with 0.3 JND precision
DICOM Characterization	Average characteristic curve applied	LCD panels individually factory characterized with a NIST-traceable photometer. Characteristic data is stored in the display and remains available throughout the product life.			
DICOM Calibration	DICOM calibration performed by Dome CXtra™ using DICAL	DICOM calibration performed by Dome CXtra™ using the RightLight™ internal photometer and automatically maintained for the life of the display.			
DICOM Conformance Testing	Independent conformance testing using Dome CXtra™ with an external photometer.	DICOM conformance maintained by RightLight™ internal photometer. Independent conformance testing using Dome CXtra™ with an external photometer.			DICOM conformance maintained by RightLight™ internal photometer. Automated conformance testing through RightCheck front sensor.
PANEL CONNECTIVITY					
Video Input	DVI-D and VGA	Dual Link DVI-D	DVI-D	DisplayPort 1.1 and Dual Link DVI-D	DisplayPort 1.1 and Dual Link DVI-D
Pixel Data Sizes	8-bit, 16-bit, and 24-bit per pixel color	8-bit, 16-bit, and 24-bit per pixel color	8-bit, 16-bit, and 24-bit per pixel color	8-bit, 16-bit, 24-bit, and 30-bit per pixel color	8-bit, 16-bit, 24-bit, and 30-bit per pixel color
VGA Compatibility	640 x 480 to 1600 x 1200	640 x 480 and 1600 x 1200	640 x 480 to 1280 x 1024	640 x 480 to 1280 x 1024	640 x 480 to 1280 x 1024
USB Interface	Built-in USB 2.0 HUB on stand	Built-in USB 2.0 HUB on monitor	Built-in USB 2.0 HUB on stand	Built-in USB 2.0 HUB on stand, USB B upstream port	USB B upstream port
PHYSICAL CHARACTERISTICS					
Display Size without stand (H x W x D)	13.6" x 17.5" x 2.8" (345mm x 445mm x 72mm)	27.6" x 18.8" x 3.3" (702mm x 477mm x 83mm)	17.3" x 13.5" x 3.7" (440mm x 343mm x 95mm)	18.7" x 14.5" x 4.0" (475mm x 369mm x 102mm)	18.7" x 14.3" x 3.9" (475mm x 363mm x 99mm)
Weight without stand	12 lbs (5.4 kg)	20 lbs (9.1 kg)	12 lbs (5.4 kg)	15 lbs (6.6 kg)	14 lbs (6.4 kg)
Weight with stand	20 lbs (9.0 kg)	27 lbs (12.2 kg)	20 lbs (9.1 kg)	23 lbs (10.2 kg)	21 lbs (9.3 kg)
Mounting Options	100 x 100 mm VESA mounting standard. Desktop stand includes height, pivot, swivel, and tilt adjustment.				
Power Input	100 to 240 VAC 50-60 Hz	100 to 240 VAC 50-60 Hz	100 to 240 VAC 50-60 Hz	100 to 240 VAC 50-60 Hz	100 to 240 VAC 50-60 Hz
Power Consumption	40 Watts typical	105 Watts typical	60 Watts typical	81 Watts typical	81 Watts typical
Operating Range	10 to 35 degrees C	10 to 35 degrees C	0 to 35 degrees C	10 to 35 degrees C	10 to 35 degrees C
CERTIFICATIONS					
Medical	—	FDA 510(k) cleared, K120709	FDA registration #2954921 and #1226517; 510(k)	FDA registration #2954921 and #1226517; 510(k)	FDA registration #2954921 and #1226517; 510(k)
Safety & EMI	UL, cUL, FCC, CE, CCC, VCCI, KCC	UL, cUL, FCC, CE, CCC, VCCI	ANSI/AAMI ES60601-1, EN60601-1, EN60601-1-2, CAN/CSA-C22.2 No. 60601-1, FCC, CE, CCC, TUV-GM, VCCI, KCC	ANSI/AAMI ES60601-1, EN60601-1, EN60601-1-2, CAN/CSA-C22.2 No. 60601-1, FCC, CE, CCC, TUV-GM, VCCI, KCC	ANSI/AAMI ES60601-1, EN60601-1, EN60601-1-2, CAN/CSA-C22.2 No. 60601-1, FCC, CE, CCC, TUV-GM, VCCI, KCC
Environmental	RoHS, WEEE, REACH	RoHS, WEEE, REACH	RoHS, WEEE, REACH	RoHS, WEEE, REACH	RoHS, WEEE, REACH
SERVICE AND SUPPORT					
Warranty	3-year standard warranty	5-year standard warranty	5-year standard warranty		
Backlight Warranty		3-year standard warranty	5-year standard warranty		

Specifications may vary based on customized solution requirements. Because we continually improve our products, specifications are subject to change without notice.

Dome® Grayscale Medical Imaging Displays

Make the *Right Choice*.



www.ndssi.com

Corporate Headquarters

5750 Hellyer Avenue
San Jose, CA 95138 (USA)
Tel: 408 776 0085
Toll Free: 866 637 5237
Email: info@ndssi.com

Europe

Nijverheidscentrum 28
2761 JP Zevenhuizen (ZH)
The Netherlands 
Tel: + 31 180 63 43 56
Email: info-emea@ndssi.com

Asia Pacific

Sea Fort Square/Center Building, 8F
2-3-12 Higashi-Shinagawa
Shinagawa-ku Tokyo, Japan 140-0002
Tel: + 81 3 5781 8292
Email: info@ndssi.jp

© 2012 NDS Surgical Imaging. Features and specifications are subject to change without notice. Products may not be available in all markets and are subject to the regulatory or medical practices that govern individual markets. Always refer to the package insert, product label and/or user instructions before using any NDSsi product. Contact your NDSsi representative for more information. All trademarks are property of their respective owners.



	Dome S10	Dome S3	Dome E2*	Dome E3	Dome E5
LCD CHARACTERISTICS					
Technology	TFT AMLCD Dual Domain IPS, single 10-bit pixels	TFT AMLCD Dual Domain IPS, 3 subpixels per pixel	TFT AMLCD Dual Domain IPS, 3 subpixels per pixel	TFT AMLCD Dual Domain IPS, 3 subpixels per pixel	TFT AMLCD Dual Domain IPS, 3 subpixels per pixel
Screen Diagonal	30" (761mm)	21.3" (541mm)	21.3" (540mm)	20.8" (528mm)	21.3" (541mm)
Display Resolution	4096 x 2560 Landscape	1536 x 2048 Portrait 2048 x 1536 Landscape	1200 x 1600 Portrait 1600 x 1200 Landscape	1536 x 2048 Portrait 2048 x 1536 Landscape	2048 x 2560 Portrait 2560 x 2048 Landscape
Pixel Pitch	157µm, 161 dpi	211.5µm, 120 DPI	0.270mm, 94 dpi	206µm, 123 dpi	165µm, 154 dpi
Viewing Angle	170° horizontal and vertical	176° horizontal and vertical	176° horizontal and vertical	170° horizontal and vertical	170° horizontal and vertical
Response Time	20 ms typical	16 ms typical	17 ms typical	25 ms typical	18 ms typical
OPTICAL CHARACTERISTICS					
Brightness	1250 cd/m² typical	1450 cd/m² typical	1000 cd/m² typical	1000 cd/m² typical	1100 cd/m² typical
Default Calibrated	500 cd/m²	600 cd/m²	600 cd/m²	600 cd/m²	500 cd/m²
Contrast Ratio	850:1 typical	900:1 typical	700:1 typical	900:1 typical	850:1 typical
DICOM LUT	16-bit architecture with 0.2 JND precision	16-bit architecture with 0.2 JND precision	3070 Shades of gray	16-bit architecture with 0.2 JND precision	16-bit architecture with 0.2 JND precision
DICOM Characterization	LCD panels individually factory characterized with a NIST-traceable photometer. Characteristic data is stored in the display and remains available throughout the product life.				
DICOM Calibration	DICOM calibration performed by Dome CXtra™ using the RightLight™ internal photometer. DICOM calibration LUT stored in the display and automatically maintained for the life of the display.				
DICOM Conformance Testing	DICOM conformance maintained by RightLight™ internal photometer. Automated conformance testing through RightCheck front sensor.		DICOM conformance maintained by RightLight™ internal photometer. Independent conformance testing using Dome CXtra™ with an external photometer.		
PANEL CONNECTIVITY					
Video Input	Two Dual Link DVI-D	DisplayPort 1.1 and Dual Link DVI-D	DVI-D and VGA	Dual Link DVI-D	Dual Link DVI-D
Pixel Data Sizes	8-bit and 10-bit per pixel grayscale, 24-bit color mapped to luminance	8-bit, 10-bit per pixel grayscale, 24-bit color mapped to luminance	8-bit per pixel grayscale, 24-bit color mapped to luminance	8-bit and 10-bit per pixel grayscale, 24-bit color mapped to luminance	8-bit and 10-bit per pixel grayscale, 24-bit color mapped to luminance
VGA Compatibility	640 x 480 to 1280 x 1024	640 x 480 to 1280 x 1024	640 x 480 to 1600 x 1200	640 x 480 to 1280 x 1024	640 x 480 to 1280 x 1024
USB Interface	USB B upstream port	USB B upstream port	Built-in USB 2.0 HUB on stand	Built-in USB 2.0 HUB on stand	Built-in USB 2.0 HUB on stand
PHYSICAL CHARACTERISTICS					
Display Size without stand (H x W x D)	27.5" x 18.6" x 3.1" (699mm x 473mm x 80mm)	18.7" x 14.3" x 3.9" (475mm x 363mm x 99mm)	19.0" x 14.7" x 4.0" (482mm x 374mm x 102mm)	18.7" x 14.5" x 4.0" (475mm x 368mm x 102mm)	18.5" x 15.2" x 4.1" (470mm x 387mm x 103mm)
Weight without stand	17 lbs (7.7 kg)	14 lbs (6.4 kg)	14 lbs (6.4 kg)	14 lbs (6.4 kg)	14 lbs (6.4 kg)
Weight with stand	24 lbs (10.9 kg)	21 lbs (9.3 kg)	22 lbs (10 kg)	22 lbs (10.0 kg)	22 lbs (10.0 kg)
Mounting Options	100 x 100 mm VESA mounting standard. Desktop stand includes height, pivot, swivel, and tilt adjustment				
Power Input	100 to 240 VAC 50-60 Hz	100 to 240 VAC 50-60 Hz	100 to 240 VAC 50-60 Hz	100 to 240 VAC 50-60 Hz	100 to 240 VAC 50-60 Hz
Power Consumption	90 Watts typical	70 Watts typical	33 Watts typical	60 Watts typical	55 Watts typical
Operating Temperature Range	5 to 35 degrees C	10 to 35 degrees C	0 to 35 degrees C	10 to 40 degrees C	10 to 35 degrees C
CERTIFICATIONS					
Medical	FDA registration #2954921 and #1226517; 510(k)	FDA registration #2954921 and #1226517; 510(k)	MDD	FDA registration #2954921 and #1226517; 510(k)	FDA registration #2954921 and #1226517; 510(k)
Safety & EMI	ANSI/AAMI ES60601-1, EN60601-1, EN60601-1-2, CAN/CSA-C22.2 No. 60601-1, FCC, CE, CCC, TUV-GM, VCCI, KCC	ANSI/AAMI ES60601-1, EN60601-1, EN60601-1-2, CAN/CSA-C22.2 No. 60601-1, FCC, CE, CCC, TUV-GM, VCCI, KCC	ANSI/AAMI ES60601-1, EN60601-1, EN60601-1-2, CE, CCC, FCC, VCCI	ANSI/AAMI ES60601-1, EN60601-1, EN60601-1-2, CAN/CSA-C22.2 No. 60601-1, FCC, CE, CCC, TUV-GM, VCCI, KCC	ANSI/AAMI ES60601-1, EN60601-1, EN60601-1-2, CAN/CSA-C22.2 No. 60601-1, FCC, CE, CCC, TUV-GM, VCCI, KCC
Environmental	RoHS, WEEE, REACH	RoHS, WEEE, REACH	RoHS, WEEE, REACH	RoHS, WEEE, REACH	RoHS, WEEE, REACH
SERVICE AND SUPPORT					
Warranty	5-year standard warranty		5-year standard warranty		5-year standard warranty
Backlight Warranty	10-year standard warranty		5-year standard warranty		10-year standard warranty

Specifications may vary based on customized solution requirements. Because we continually improve our products, specifications are subject to change without notice.

* E2 product is not for sale in the USA.