

Battery Excessive Draw - Integration Relay

Service Category Power Source/Network

Section Power Distribution

Market USA

Toyota Supports
ASE Certification 

Applicability

YEAR(S)	MODEL(S)	ADDITIONAL INFORMATION
2011	Sienna	Body Type(s): Van Drive Type(s): 4WD, 2WD Engine(s): 2GR, 1AR Plant Code(s): S Transmission(s): 6AT VDS(s): DK3DC, JK3DC, KA3DC, KK3DC, XK3DC, YK3DC, ZK3DC WMI(s): 5TD

Introduction

Some 2011 Sienna vehicles may exhibit a condition where the battery loses its charge overnight even though the vehicle was properly closed and locked with the interior lights turned off. In the event that a parasitic draw exceeding 2 amps is discovered and the A/C compressor clutch is confirmed to remain on with the ignition off, this bulletin provides a repair procedure involving circuit inspection and replacement of the Integration Relay.

Production Change Information

This bulletin applies to vehicles produced **BEFORE** the Production Change Effective VINs shown below.

MODEL	DRIVETRAIN	PRODUCTION CHANGE EFFECTIVE VIN
Sienna	2WD	5TDKA3DC#BS008690
		5TDZK3DC#BS162223
		5TDKK3DC#BS162223
		5TDXK3DC#BS162223
		5TDYK3DC#BS162223
	4WD	5TDJK3DC#BS027553
		5TDDK3DC#BS027553

Battery Excessive Draw - Integration Relay

Parts Information

PREVIOUS PART NUMBER	CURRENT PART NUMBER	PART NAME	QTY
82641-08050	82641-08071	Relay, Integration	1
82641-08030	82641-08080	Relay, Integration	1
82641-08040	82641-08090	Relay, Integration	1
82641-08060	82641-08100	Relay, Integration	1

Warranty Information

OP CODE	DESCRIPTION	TIME	OFP	T1	T2
832421	R & R Integration Relay	0.2	82641-08050	82	73
			82641-08030		
			82641-08040		
			82641-08060		

APPLICABLE WARRANTY

- This repair is covered under the Toyota Comprehensive Warranty. This warranty is in effect for 36 months or 36,000 miles, whichever occurs first, from the vehicle's in-service date.
- Warranty application is limited to occurrence of the specified condition described in this bulletin.

Required Tools & Equipment

REQUIRED EQUIPMENT	SUPPLIER	PART NUMBER	QTY
TIS Techstream* or Techstream Lite NOTE: Software version 7.00.020 or later is required.	ADE	TSPKG1 or TSLITEDLR01	1

* Essential SST.

NOTE

Additional Techstream units may be ordered by calling Approved Dealer Equipment (ADE) at 1-800-368-6787.

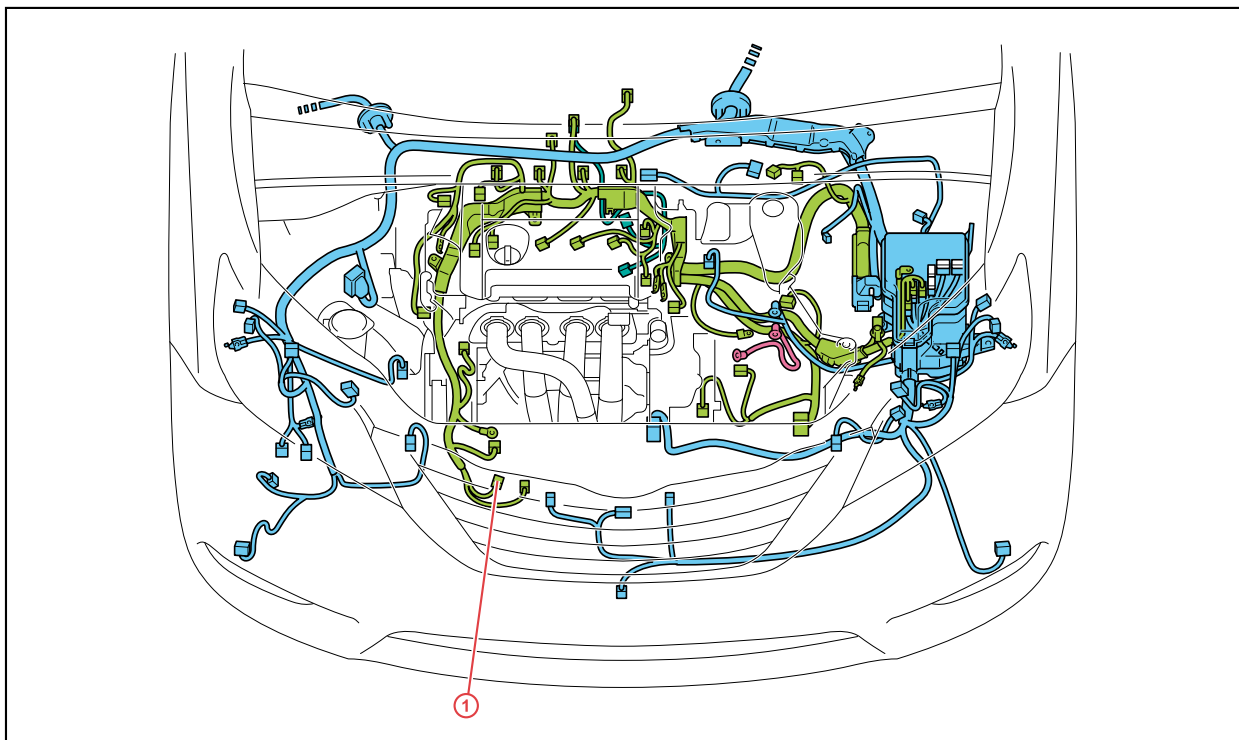
Battery Excessive Draw - Integration Relay

Repair Procedure

Inspection Procedure

1. Confirm the vehicle is produced before VIN # listed above.
2. If an abnormally high parasitic draw of approximately 2 amps is confirmed with ignition key in the "OFF" position proceed to step 3.

Figure 1. Connector B41 Location



1 B41 Connector

3. With the ignition key in the "OFF" position, disconnect connector B41 and verify the A/C clutch audibly clicks "OFF". If a click is heard proceed to step 4.
4. From the front side of the connector, confirm battery voltage on A/C clutch B41 connector. If battery voltage is present, proceed to step 5.
5. Replace Integration Relay.

NOTE

For additional details on inspection and repair, refer to the Technical Information System (TIS), applicable model and model year Repair Manual:

- [2011](#) Sienna:
Vehicle Interior – Heating/Air Conditioning – "Air Conditioning System (for Manual Air Conditioning System: Air Conditioning Compressor Magnetic Clutch Circuit"

Battery Excessive Draw - Integration Relay

Repair Procedure (Continued)

Integration Relay Replacement

1. Release the black retaining tabs at the top of the relay using a pick or blade screw driver.

Figure 2.



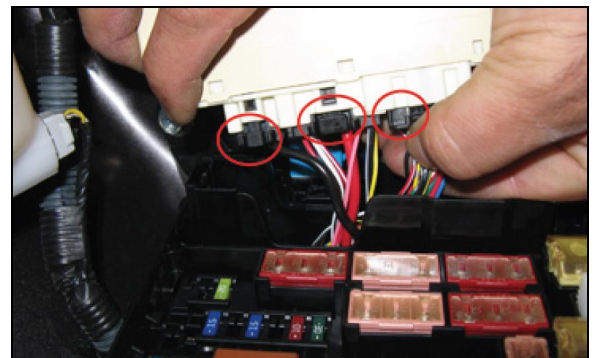
2. Grasp and pull straight up on the integration relay after both tabs are released.

Figure 3.



3. Release all 3 connectors at the bottom of the integration relay.

Figure 4.



4. Connect all 3 connectors into the bottom of the new integration relay and push the relay assembly down into the junction block until both black tabs click into place.
5. Confirm normal compressor clutch on/off operation with engine running and A/C on, and with vehicle turned off.